

+ ScanData Manager

Analysis and reporting software

APPLICATIONS

- + Analysis of data acquired using Scanner* flow computers

BENEFITS

- + Expedited review and evaluation of flow data
- + Data viewing in a spreadsheet or trend graph
- + Filtration and sorting of flow run data
- + Filtration of alarms, events, and user changes
- + Capability of printing, exporting, and e-mailing data
- + Data conversion to custom formats
- + Professional, customized reporting

Reviewing, analyzing, and sharing historical measurement data from Scanner flow computer downloads is easy with our ScanData Manager analysis and reporting software.

The software provides quick access to data when and where it is needed—in the field or in the office—and provides the detail required for a complete job analysis and the tools for summarizing the analysis in a professional, easy-to-read report. ScanData Manager software is available for download on the Sensia website.

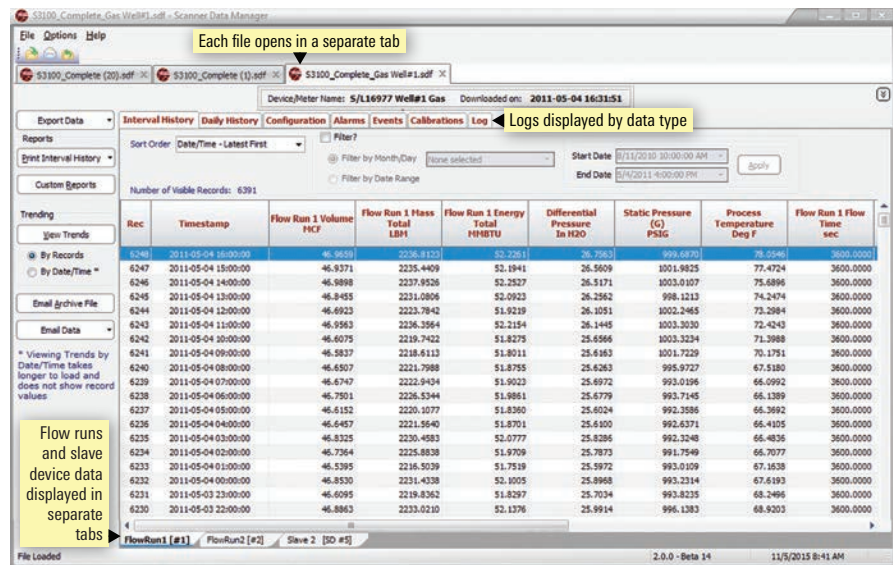
ScanData Manager software supports download files (.sdf and .scm) from Scanner Model 3100, 2000, 2100, 2200, 1131, 1140, and 1141 flow computers.

VIEWING

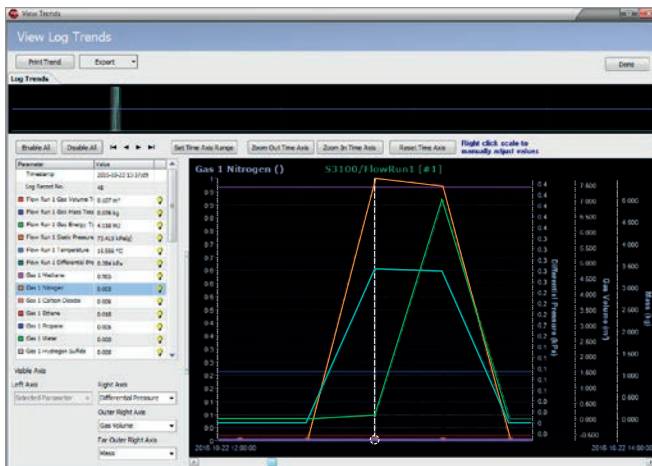
A simple double-click unlocks a download file and displays its contents in logical groupings across the computer screen. Data is grouped by data type in a series of tabs (Interval History, Daily History, Configuration, Alarms, Events, etc.) and chronologically organized within each data group, enabling the user to quickly locate specific data.

Flow run data can be filtered and sorted by date or date range. Alarms, events, and user changes can be filtered by alarm, event, or change type. Data can be printed, viewed as a trend, exported, or e-mailed.

ScanData Manager software is easily customizable to suit users' needs. An operator can change parameter default units to imperial units, metric units, or a combination of both. Viewing options may vary depending on the Scanner flow computer in use.



Data generated by Scanner Model 2000, 2100, 2200, and 3100 flow computers are downloaded in PDF. Data generated by Scanner Model 1130, 1140, and 1141 flow computers are downloaded in SCM format



Measurement parameter trends can be viewed in a full-color graph to expedite analysis

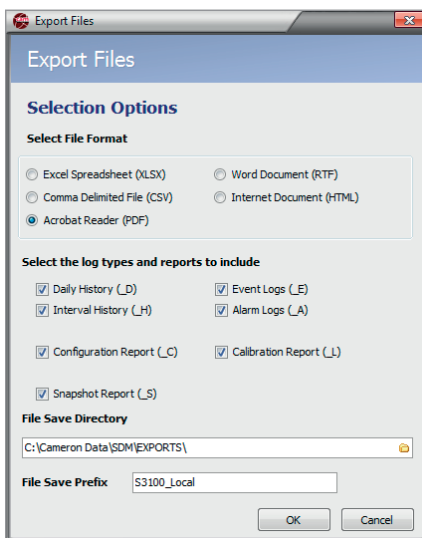
TRENDING

Trends for logged measurement parameters can be displayed in a full-color graph, reducing the time required to analyze large volumes of data. The user can zoom and scroll, turn parameters off and on, and specify the scale of the trend to be analyzed. Up to four y-axes are available for analyzing multiple parameters with different scales.

EXPORTING

Users can export data in a universal Windows®-compatible format for sharing with others. Tabular data can be exported to .pdf, an Excel spreadsheet (.xlsx), a comma-delimited file (.csv), an Internet page (.htm), or a text document (.rtf). Users can save files with a unique prefix, if desired, to help identify data by a specific operation or well location.

Graphical data can also be exported in a variety of formats.



Files can be easily exported and converted to many standard formats

The screenshot shows a 'Production Report' for 'S3100/FlowRun2 (#2)'. The header includes company information (Sensia Global), site details (S3100-G1), and report metadata (Downloaded on: 2015-04-23 14:08:59). Below the header is a table with columns: Date/Time, Volume m³, Mass kg, Energy kJ, Diff. Press. kPa, Stat. Press. kPa, Temp. °C, and Flow Time s. The table contains 14 rows of data. Summary statistics at the bottom include Average, Weighted Avg, Minimum, Maximum, and Total values for Volume, Mass, Energy, and Flow Time. The report is titled 'Production Report' and includes a 'YOUR LOGO HERE' placeholder.

Two reporting options enable improved flexibility

CONVERSION

ScanData Manager software also allows users to convert measurement data to a custom format, such as Flow-Cal® and PGAS®, for integration into a host computer. The software streamlines this process through individual and batch file conversion.

To ensure the integrity of the measurement audit trail, the original .sdf and .scm download files are automatically archived with each conversion.

REPORTING

ScanData Manager software provides two reporting options to satisfy the needs of a variety of users. The standard report option displays data in a tabular presentation that can be printed and exported.

A customized report is available for those who prefer more control over the content displayed. This report can be personalized with a company name, address, and logo, if desired. Summary rows can be added for displaying a total, minimum, maximum, average, or weighted average value for a selected log type, and configuration parameters such as pipe size, plate size, and contract hour can be added to the report header. Custom report selections are easily saved in a template for reuse.

DOWNLOAD SOFTWARE

To download ScanData Manager software, go to <https://www.sensia.com/measurement/flow-computers-and-automation>. Then click on the flow computer model to access its software.

Contact Sensia for a demonstration of the ScanData Manager software or to learn more about how Scanner flow computers can help you automate flow measurement and control.