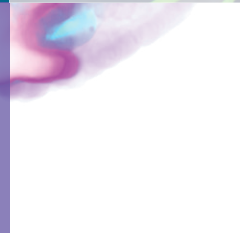
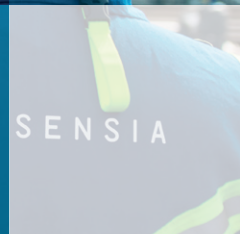




# Take Sustainable Intelligent Action

Connect, automate and  
optimize operations across  
the asset lifecycle



# Rapidly connect, automate and optimize assets for peak operational performance.

**At Sensia we combine deep domain expertise with real-time digital intelligence to simplify operational complexity and transform performance and efficiency across energy production.**

From real-time surveillance and wellhead control to process safety systems and automation projects, we make intelligent automation accessible to every energy company. With Sensia, every asset operates more productively, profitably and sustainably.

## **The unification of connection, automation and optimization**

Sensia brings together the best of the best: the pioneering process automation and safety, real-time control and IoT technologies of Rockwell Automation, combined with the unmatched measurement and instrumentation, software and analytics capabilities of SLB. This is further strengthened by the energy domain expertise and artificial lift experience shared by Rockwell Automation.

The result is the leading automation specialist in sustainable energy production, transportation and processing, with a team of over 1,000+ experts serving customers globally.

## **We are leading the way in an ever-changing world**

### **+ Accelerating decarbonization**

We support the world's transition to low-cost and sustainable energy by helping you to decarbonize processes and lower hydrocarbon production – operation-wide.

### **+ Empowering diversification**

We work closely with our clients to support their diversification into renewable and carbon-free energy production to achieve ambitious net-zero targets.

### **+ Enabling optimization**

We get operations to first production faster. Reducing costs, improving efficiency and maximizing asset productivity to generate quicker, lower-cost energy.

### **+ Assuring compliance**

We keep operations compliant with local regulations and global ESG goals with accurate, real-time monitoring designed to reduce human, operational, and financial risk.



# We drive performance, productivity and profit through Sustainable Intelligent Action

To create a more secure, productive and profitable tomorrow, we need to take Sustainable Intelligent Action today.

Our digitalization and automation solutions connect, automate, and optimize every aspect of the energy production process to make your operation smarter, safer and more sustainable. By minimizing the time between detection and correction, you can enjoy a step-change in performance— increasing production, optimizing assets, managing ESG risk, cutting costs and reducing time to first production. From Edge to Enterprise.

## CONNECT

Seamlessly connect your assets, data, and systems — gaining real-time visibility and insights to drive smarter, faster decisions.

## AUTOMATE

Turn intelligence into action — automating operations to boost efficiency, enhance safety, strengthen security, and adapt to change in real-time.

## OPTIMIZE

Maximize performance and sustainability —unlocking higher productivity, lower emissions, and greater profitability across your operations.



**CONNECT**  
See the full picture

**AUTOMATE**  
Transform insight  
into action

**OPTIMIZE**  
Boost performance  
and sustainability



# From Edge to Enterprise

Sensia reduces risk, drives efficiency, and optimizes performance, so our clients and their stakeholders can achieve the full potential of their assets.

- |                              |                   |
|------------------------------|-------------------|
| + Operational certainty      | + Improve safety  |
| + Increase uptime            | + Increase output |
| + Optimize asset utilization | + Extend life     |



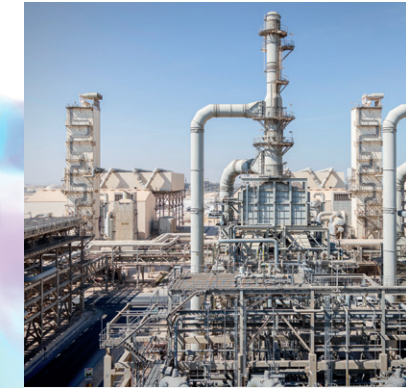
## Production solutions

Our unified solutions bring together measurement, software and automation in ways that have the greatest effect on production results.



## Transportation and storage solutions

Sensia combines hydrocarbon flow knowledge with process control and safety system expertise to create scalable automation solutions that address the extent and complexity of sustainable transport operations.



## Processing solutions

Across all oil, gas, and renewable energy facilities, Sensia is helping global customers increase operational effectiveness, maintain safety, and optimize processes.



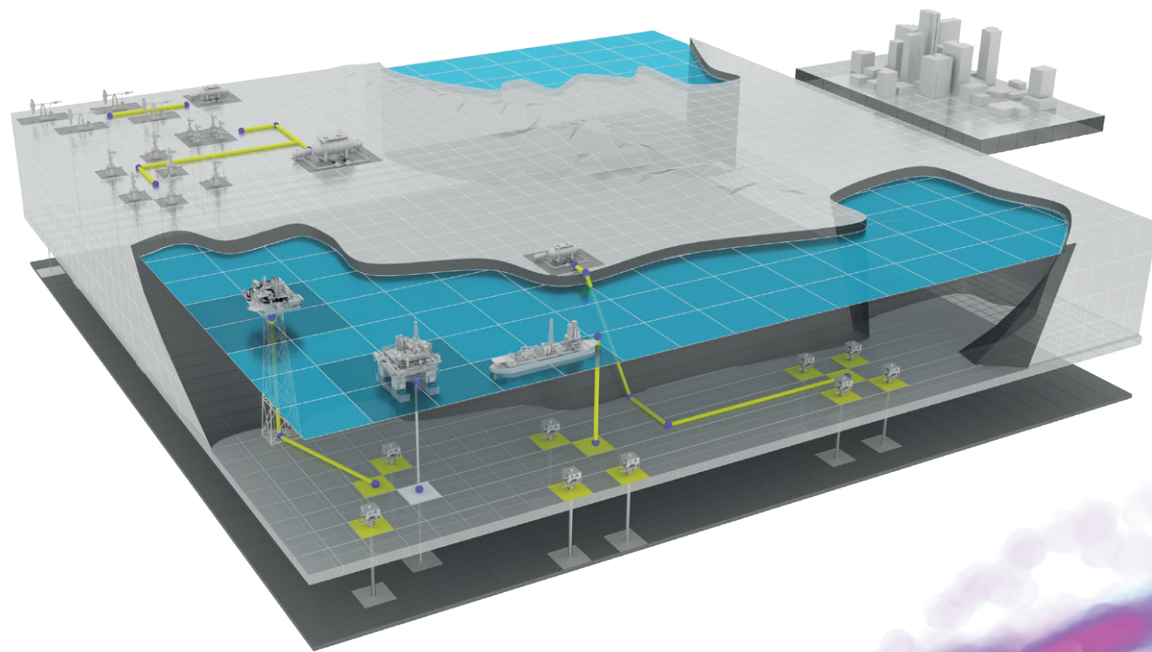
## Production Solutions

# The greatest effect on results

**On and offshore, the production improvements available through intelligent automation deliver greater operational efficiency and asset productivity.**

Our digitalization and automation solutions connect, automate, and optimize every aspect of the energy production process to make your operation smarter, safer and more sustainable. By minimizing the time between detection and correction, you can enjoy a step-change in performance— increasing production, optimizing assets, managing ESG risk, cutting costs and reducing time to first production.

From Edge to Enterprise.



## Land

### Lower costs, greater operational effectiveness

Today's engineers face numerous challenges to keep wells and fields running safely, efficiently and performing cost effectively as assets mature and the market shifts. From automating artificial lift systems in single wells to complex multi-well pad production scenarios, Sensia brings decades of experience of serving the global energy industry, and one of the largest installed bases in the market.

Field-proven technologies combine hardware with digital innovations such as Cloud connectivity and process virtualization to bring the advantages of seamless automation to every energy company.

## Offshore

### Higher reliability meets operational visibility

As your experienced Main Automation Contractor, Sensia's solutions-focused, knowledgeable, and certified offshore engineering team provides modular and turnkey projects, backed by lifetime support services.

Our extensive portfolio has performed reliably for decades in demanding conditions and against space and weight restrictions offshore. Integration is simplified using open systems to unify subsea and topside environments, automating activities such as process control and motor control to bring process and power efficiency gains to your topsides.

With your operational infrastructure integrated by Sensia you have access to analytical tools that provide new visibility, accelerate decision making, reduce costs and improve production performance.

## Subsea

### Long-term reliability where it counts

Subsea systems and equipment are engineered to operate continually in extremes of depth, temperature, and strong currents. Inaccessibility means that the impact of any subsea equipment failure — resulting in lost production and complex remediation — is costly.

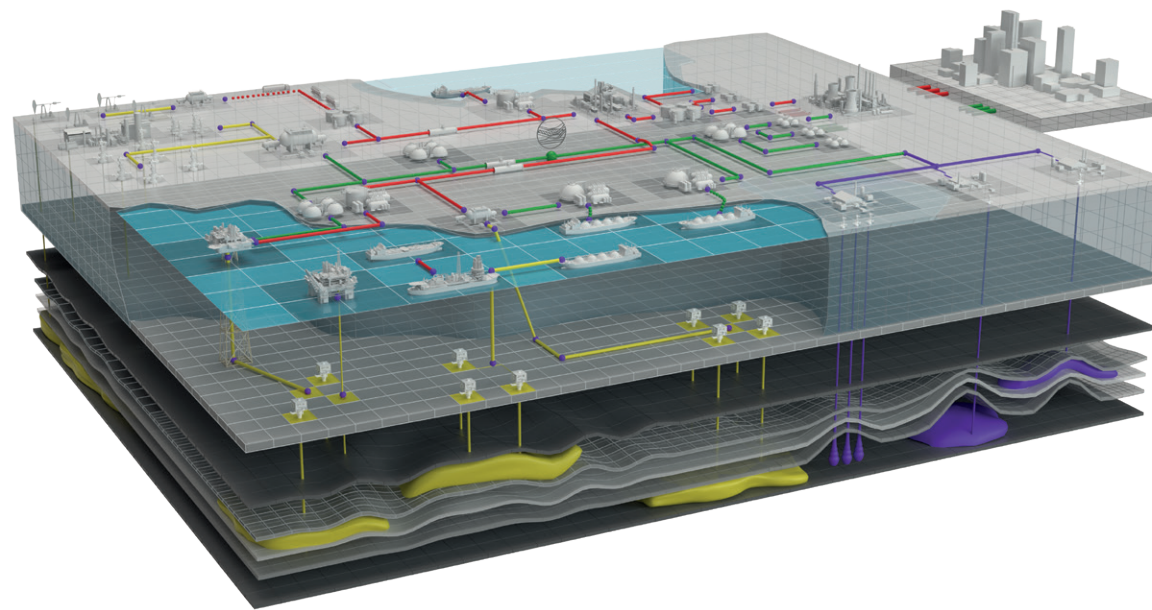
High-reliability architecture and reduced maintenance programs are critical components for any subsea operator. Sensia leads the industry with subsea automation, control, and safety systems. Our SIL-rated product portfolio and exceptional scan rates meet the demand needs of HIPPs and OPP systems offshore. Field-proven technologies combine hardware with digital innovations such as Cloud connectivity and process virtualization to bring the advantages of seamless automation to every energy company.

## Transportation Solutions

# Keep revenues flowing

We bring value to new and the millions of miles of existing pipelines to help meet rising demands for transporting oil, gas, and petroleum products.

Whether your pipelines are remote and unmanned or pass near densely populated areas, the ability to keep product flowing 24/7 and stored safely is critical. Sensia combines hydrocarbon flow knowledge with process control and safety system expertise to create scalable automation solutions that address the extent and complexity of your transport operations.



## Oil transport

### Close the gap between detection and correction

Today's engineers face numerous challenges to keep wells and fields running safely, efficiently and performing cost effectively as assets mature and the market shifts. From automating artificial lift systems in single wells to complex multi-well pad production scenarios, Sensia brings decades of experience of serving the global energy industry, and one of the largest installed bases in the market.

Field-proven technologies combine hardware with digital innovations such as Cloud connectivity and process virtualization to bring the advantages of seamless automation to every energy company.

## Gas transport

### Quick wins for the long game

As your experienced Main Automation Contractor, Sensia's solutions-focused, knowledgeable, and certified offshore engineering team provides modular and turnkey projects, backed by lifetime support services.

Our extensive portfolio has performed reliably for decades in demanding conditions and against space and weight restrictions offshore. Integration is simplified using open systems to unify subsea and topside environments, automating activities such as process control and motor control to bring process and power efficiency gains to your topsides.

With your operational infrastructure integrated by Sensia, you have access to analytical tools that provide new visibility, accelerate decision making, reduce costs and improve production performance.

## CCUS

### The journey to net-zero

Touted as one of the most significant decarbonization technologies, carbon capture, utilization and sequestration could remove 90% of CO<sub>2</sub> emissions from power plants and industrial facilities.

Throughout the process, and especially during transportation, small changes in pressure or temperature can alter flow, density, and compressibility. At each stage, it's essential to have the right tools to recognize changes and act. Our holistic system architecture means you remain in control of optimization at every step.

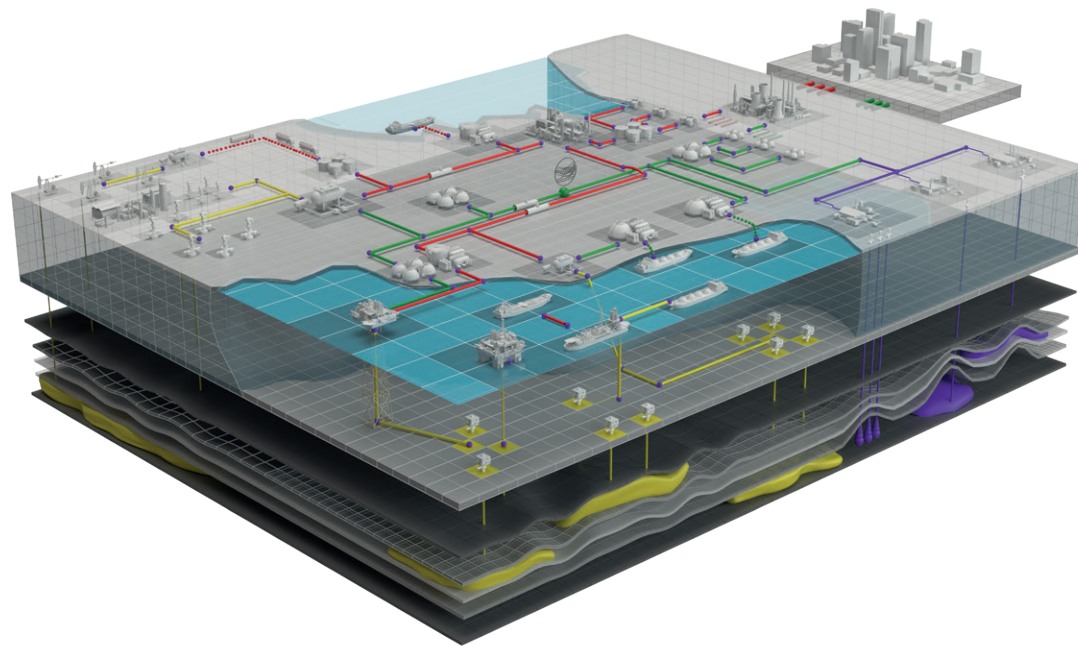


## Processing Solutions

# Greater performance from every process

Many of the disparate systems controlling processes, measuring fluids, and performing other functions, were never designed to communicate, leaving your teams to keep them working together.

Sensia helps you remedy this, with integrated solutions that introduce intelligent automation. Our knowledgeable engineers and project managers understand your issues and exactly what's needed — designing open solutions that keep production levels high. From oil refineries to LNG regasification facilities, Sensia has helped global customers increase operational effectiveness, maintain safety, and optimize processes.



## Meet performance objectives

### Refineries and processing facilities

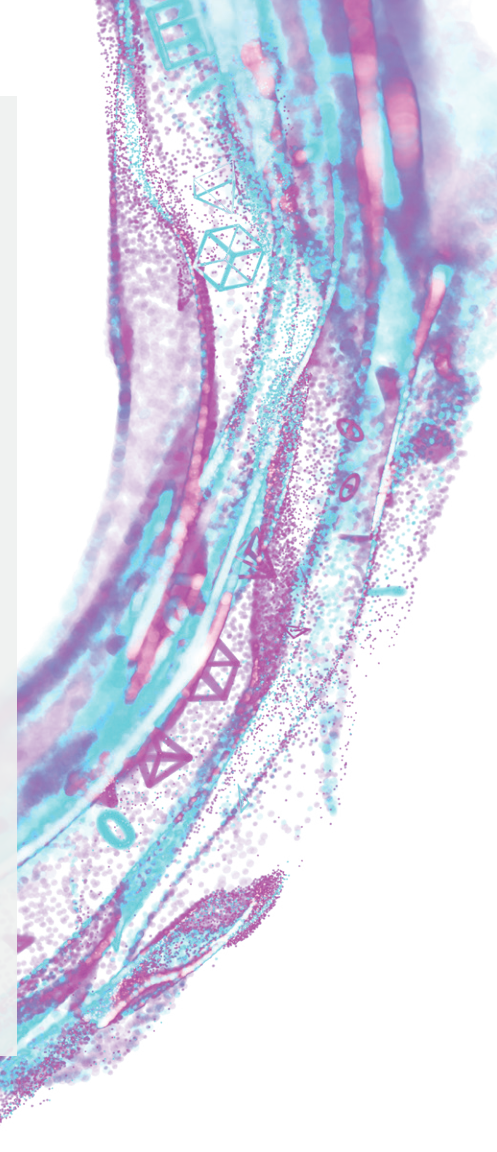
Keeping oil refineries and processing plants or facilities productive, efficient and safe, calls for tight control over processes, combined with round-the-clock access to operational insight. It's a challenge now being met by the application of intelligent automation. Building on more than 50 years' experience in working with processing facilities, Sensia can help you design, seamlessly deploy, and maintain the ideal system for your operations.

## Add automation, not complication

### Gas liquefaction plants and LNG regasification

To be able to promptly respond to fluctuations in demand and price, gas facilities must optimize yield, minimize downtime and operational costs — all without introducing risk. Improving plant efficiency while increasing throughput is possible without a complete plant overhaul. These efficiencies can come from systems integration — uniting your plant's information, control and power systems to enable intelligent automation.

Sensia provides world-class natural gas processing automation systems — we can automate end-to-end compression and separation processes, the control of specific plant equipment and the management of plant performance data. Sensia solutions meet stringent process control requirements, while being reliable and scalable.





# A history of setting the standard. A future of raising the bar.

**Sensia delivers at any scale — from individual sensors and integrated systems to field-wide engineered solutions.**

## **Sensia Measurement Systems**

Measurement data is a vital input for any control, automation or optimization system. However, unlike many other processes, measurement presents unique challenges that demand careful technology selection. Sensia measurement systems provides proven flow measurement products, engineered systems and services specifically for the energy industry. Our experts bring their specialist domain expertise to help select the right solution with performance appropriate for the application to ensure it meets your business, measurement and optimization goals.

Sensia measurement technology enables our customers to digitalize, automate and optimize the production, transportation and processing of oil & gas, as well as providing auditable and traceable measurements for fiscal, custody transfer and allocation management. Our solutions range from stand-alone flow meters to fully integrated systems that are compliant with any applicable standards and configured to meet the needs of your application whilst delivering a rapid return on investment.

Our large installed base of technology from market leading brands such as CALDON, JISKOOT, BARTON, NUFLO and SWINTON are field-proven and internationally recognized as best in class.

## **Integrated systems**

- + Custody transfer metering
- + Crude oil and condensate sampling
- + Wellpad control and distributed measurement
- + LNG sampling and metering
- + HIPPS

## **Product portfolio**

- + Custody transfer flow meters
- + Process flow meters
- + Flow meter totalizers
- + Flow computers and controllers
- + Chart recorders and DP devices
- + Oil & gas samplers

## **Services**

- + Sampling and measurement consultancy
- + Site surveys and system health checks
- + Application assessments and scope design
- + Field service, technical support and repair
- + Expert customer training

## **Brands**

- + BARTON
- + CALDON
- + CLIF MOCK
- + JISKOOT
- + NUFLO
- + SWINTON





Sensia delivers

## Reducing the time between detection and correction

### Sensia Digital Solutions

Sensia Digital Solutions improve operations and engineering workflows by combining domain knowledge, market leading software, and proven automation systems for the most efficient, proactive management of your production assets.

We uniquely take advantage of our leading petrotechnical software, cloud connectivity, data ecosystems and analytics to overcome today's energy challenges. By connecting subsurface assets with field equipment, network infrastructure and communications, operators can assess the current state of production system performance from wherever they are from the reservoir to the refinery.

Real-time measurements are automatically collected, combined with multiple data sources, interpreted using built-in analysis systems and visualized to provide insights and smart recommendations. Decision-makers can now respond to issues as soon as they arise to maximize production, reduce cost, eliminate shortfalls and minimize HSE impact.

Our industry-leading digital solutions are relied upon daily by thousands of engineers worldwide to understand the health of their production assets, hit production targets consistently, and assure the safe delivery of oil & gas products to the point of transfer.

Brands





**Sensia delivers**

## Track, measure and report with ease and confidence

### **Sensia data management**

Across all streams, millions of data points are available to operators. Our technology solutions allow you to collect, organize and disseminate powerful data sets that mean you remain in control of your operation from end-to-end — and from anywhere.

From enhancing profitability to reducing emissions, the Sensia portfolio of connected intelligence solutions means you can build a clear picture of your operation.

### **AEG**

The Avalon Edge Gateway enhances remote operations in oil & gas through seamless data acquisition, monitoring, and control. It connects to Modbus devices or Ethernet and includes cellular connectivity for comprehensive coverage. Designed for easy deployment in harsh environments, it integrates with Sensia's Avalon IoT Platform for real-time insights, leveraging a durable, compact design for installation in existing field enclosures. This gateway is key for operational efficiency, supporting edge-based analytics and secure data management across remote assets.

### **Avalon**

Connect your operations using the Avalon core IT/OT platform and have complete access to the operational condition of the equipment and the ability to perform higher-level analytics for facility optimization.

### **Avocet**

Produce contextualized reports for onshore, offshore, conventional and unconventional sites. Standardize workflows, reduce processing time and apply standard or ad-hoc reporting.

### **Measurement Surveillance**

A low-cost-of-ownership management information system from SWINTON that provides a high-level view of the status and performance of your assets. Scalable, customizable and secure.

### **TRUST**

The SWINTON system brings all of your flow computers, PLC and CBM data together to deliver real-time monitoring and reliable metering.

### **QRATE HCC2 Hyperconverged Controller**

A best-in-class innovation that combines an edge computer, real-time processor, industrial IO, GPS, cellular modem, Wi-Fi, and ethernet switch into one rugged platform.





Sensia delivers

## Scalable automation to minimize risk, improve efficiency and enhance performance

### Sensia Process Automation

Sensia Process Automation takes the latest control and information technologies available and combines them with the broad domain expertise, technology and product portfolio of Rockwell Automation and SLB.

They provide state-of-the-art, digitally enabled process control and safety automation solutions across the full value chain and extract the most value possible from new and existing assets and to maintain the safety of your personnel, assets, and the environment in which you operate.

Our teams take time to fully understand your process, control and safety needs before we engineer and deliver our scalable solutions globally. To add value to complex projects we also offer Main Automation Contractor (MAC) capabilities. Work with Sensia to reduce safety shutdowns, improve performance and remain competitive.



#### Modular automation systems

- + Wellhead monitoring and control
- + Wellpad measurement and control
- + Oilfield production management
- + Integrated process control, motor control and safety systems
- + Asset performance management solutions
- + Terminal management systems
- + Functional safety services
- + Pipeline monitoring, control and safety solutions

#### Services

- + Automation advisory services
- + Engineering services
- + Electrical consulting services
- + Field support services
- + Training

#### Brands

- + IntelliCenter\*
- + PowerFlex\*
- + PlantPAX\*
- + ControlLogix\*
- + Trusted\*
- + AADvance\*
- + Remote terminal units

#### Project execution

- + Global delivery
- + Main Automation Contractor [MAC]
- + MAC for OEM

\*Accessible Rockwell technology, Allen-Bradley technology



Sensia delivers

## Bring the advantages of industrial automation to lift

### Sensia Lift Control Systems

Lift control systems are the interface between production technology and the actions that address issues and improve performance. Automating lift with Sensia introduces new capabilities that make more cost-effective use of operational resources, assets and power, enabling the most effective recovery at the lowest cost.

Sensia Lift Control Systems brings a unique operations-first approach to automation that starts with how you lift and scales up to enable production management across multiple wells in real time.

### Add automation not complication

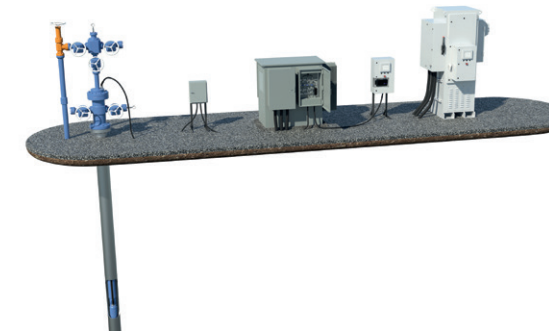
Sensia experts work with you to simplify automation infrastructure—and aim to deliver the fastest returns from the lifting systems you already have in place. It's an approach that allows operators to reduce system replacement and upgrade spend, eliminate switching costs, maximize pump life and ultimately extend field life.

Our solutions are engineered to get variable speed drives, controllers, instrumentation systems and communications all working together in one unified environment. With everything sharing a common framework, Sensia customers can quickly visualize equipment status and performance across the entire lift system to understand operating conditions and quickly take action to keep production on track



### INSTRUCT Power Analyzer

Discover the INSTRUCT Power Analyzer 2.0—a game-changing solution for advanced power monitoring and analysis. With 300+ Edge Module Outputs including real-time shaft torque and motor efficiency, it provides actionable insights for optimizing operational efficiency. Compatible with all major VSDs, MVDs, and switchboards, seamlessly integrate with Avalon Lift Surveillance for cloud-based or on-premises visualization. Detect mechanical issues early, optimize equipment uptime, and ensure peak performance under varying loads, empowering proactive maintenance and sustainability goals.



### Brands

#### ESP

- + INSTRUCT ESP Intelligent Controller
- + INSTRUCT E30 Intelligent VSD
- + INSTRUCT ES7 Intelligent VSD
- + INSTRUCT Power Analyzer 2.0

#### SRP

- + INSTRUCT SRP POC
- + INSTRUCT S10 VSD
- + INSTRUCT S30 Intelligent VSD

#### PCP

- + INSTRUCT PCP POC
- + INSTRUCT P10 VSD
- + INSTRUCT P30 Intelligent VSD

### Remote control and lift surveillance

- + Avalon Lift Surveillance
- + Automated Gas Lift Optimization Solutions



Sensia delivers

## Smarter partnerships for a sustainable future

**Sensia has always been built on bringing together the best of the best. Since acquiring Swinton Technology in 2022, we've worked tirelessly to overcome the performance challenges of sustainable energy production, transportation and processing. Side by side.**

With industry-leading capabilities built over almost 40 years spent at the cutting edge of flow computing — many members of the Swinton team have played key roles in the development of legacy flow computers and their associated metering software over several decades — most notably the S600 flow computer, which is used extensively around the world. Making them the perfect partner to enhance our flow computing offering.

### Our other brands

- + BARTON
- + CALDON
- + CLIF MOCK
- + JISKOOT
- + NUFLO
- + SWINTON



# The Sensia difference

## Open connected technology platform

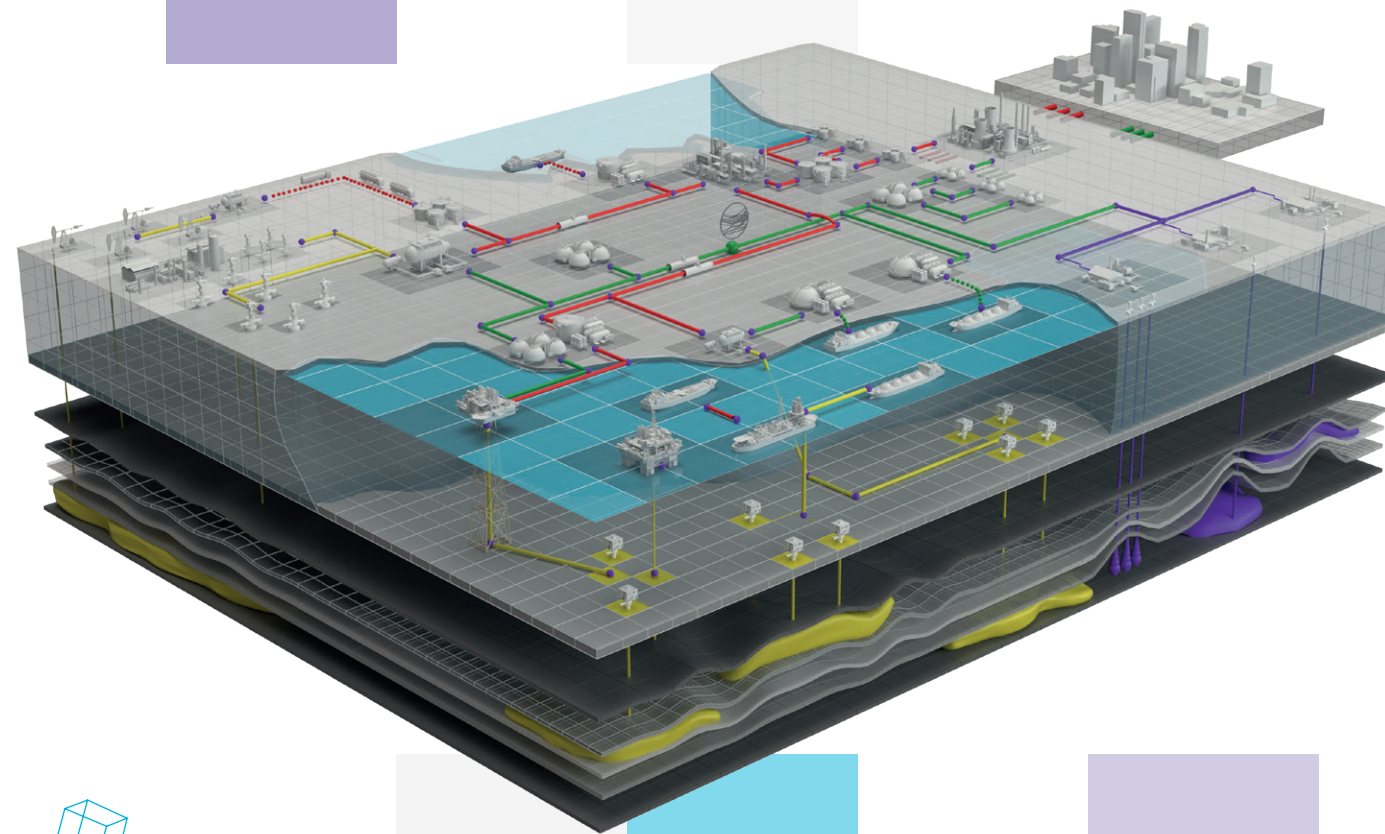
Our digital architecture creates a unified technology platform that enables the solving of automation and optimization challenges at the same time. The architecture provides a simple and consistent approach to automation which is easy to deploy and adjust. With one platform that connects sensors, cloud, assets, applications and people, it creates an environment in which to orchestrate activities across the organization.

## Global service organization

Reflecting the international nature of sustainable energy production, Sensia operates a global service organization that includes an international network of petrotechnical experts, process engineers, technicians, facilities and distribution centers. Whether customers require an individual part, remote assistance, or a planned maintenance visit, Sensia offers lifecycle service options designed to help drive out downtime.

## Domain knowledge

Sensia people hold specialist expertise in a range of key fields. Our cross-discipline teams share access to unparalleled reservoir knowledge and industrial automation as well as specialized experience of different production settings, process operations, transport and measurement. This vital combination of breadth and depth helps Sensia understand a customer's challenge from every angle, to design and deliver the most comprehensive solution.



## Technology

Sensia leadership has committed to continuous ongoing technology investment, as well as defining the direction of R&D activities and engineering best practices. By leveraging the combined technology portfolios of Rockwell Automation and SLB, we are creating the definitive platform for the automation of operations. The result will be greater alignment between individual contributors, accelerating the creation of standardized, fully integrated solutions.

## Scalable solutions delivery

Sensia customers can configure the level of services to suit their operations, and scale it as priorities change over the life of each asset. From installing a remote terminal to acting as your Main Automation Contractor, we have a proven capability to scale what we deliver to respond to unique customer requirements.

## Leading and recognized brands

Sensia combines an unrivalled portfolio of leading energy technology brands that are field-proven, unified and automated via a unique ecosystem.

## Future-focused

The energy landscape is changing at speeds never seen before. Our expertise places us in the best position to ensure you're able to adapt, understand and diversify into new sustainable methods of energy production.

## Our heritage

From day one, we have always had the experience, footprint, capabilities and resources that make us uniquely placed to bring the advantages of industrial-scale digitalization and seamless automation available to every energy company.



## **We are proud to drive performance and productivity through Sustainable Intelligent Action**

To create a more secure, productive and profitable tomorrow, we need to take Sustainable Intelligent Action today. Our solutions connect, automate and optimize every aspect of the energy production process to make your operation smarter, safer and more sustainable.

By minimizing the time between detection and correction, you can enjoy a step-change in performance – increasing production, optimizing assets, managing ESG risk, cutting costs and reducing time to first production. From Edge to Enterprise.

Sensia LLC  
Energy Tower IV, 15th floor, 11750 Katy Freeway  
Houston, TX 77079

+1-866-7SENSIA (+1-866-773-6742)

**[hello@sensiaglobal.com](mailto:hello@sensiaglobal.com)**  
**[sensiaglobal.com](https://sensiaglobal.com)**



Sensia LLC 2025. All rights reserved. 391A-MC-0825-BR

\* Mark of Sensia. Other company, product, and service names  
are the properties of their respective owners.